

BOVEC
KOBARID
TOLMIN
KANAL
NOVA GORICA

Soča Valley





DISTANCE FROM AIRPORTS (KM)

Šumnik

	Ljubljana	Trieste	Venezia	Treviso	Klagenfurt	Zagreb
BOVEC	114	86	178	181	99	280
KOBARID	106	64	164	167	120	260
TOLMIN	90	73	175	177	135	244
KANAL	146	51	153	156	150	267
NOVA GORICA	127	32	133	136	170	248



Dolina Soče

THE EMERALD SOČA RIVER IS THE MOST BEAUTIFUL RIVER IN SLOVENIA.

Its headwaters spring up in the heart of Triglav National Park, under the steep peaks of the Julian Alps. Over countless centuries, it has carved its way through deep gorges and valleys nestled amongst the Alpine peaks. It weaves through subalpine country, along the vineyard-spotted Brda Hills, to the plains of the Gorica Region where it eventually reaches the Adriatic Sea. The Soča Valley is primarily an untouched natural environment. Throughout the river valley, one can find only a few small, friendly and hospitable towns (**Bovec**, **Kobarid**, **Tolmin** and **Kanal**). There are also many picturesque mountain villages and an endless variety of natural wonders and the ruins of the paradise garden of mythical Zlatorog (Gold Horn). The first major town centre is **Nova Gorica**, which is situated at the end of the valley. Due to its rich natural features, the Soča Valley remains a key destination for active visitors who are looking to get a little exercise, relax their minds, and open their hearts.

TRIGLAV NATIONAL PARK	2
BOVEC	4
KOBARID	8
TOLMIN	12
KANAL	16
NOVA GORICA	20
WATER SPORTS	26
FISHING	27
HIKING	28
WALK OF PEACE	30
SKI RESORT KANIN–SELLA NEVEA	32
PARAGLIDING AND HANG GLIDING	34
CYCLING	35



Soča



Vrh nad Škrbino

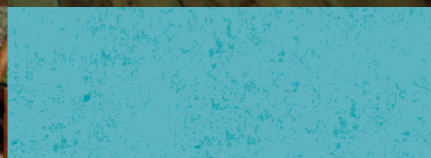


Kugy



Vršič

Trenta



TRIGLAVSKI NARODNI PARK



THE TRIGLAV NATIONAL PARK IS ONE OF THE OLDEST EUROPEAN PARKS AND THE ONLY NATIONAL PARK IN SLOVENIA.

The park was founded in 1906. Its current size was adopted in 1981 and now covers the area of the Eastern Julian Alps (84,000 hectares). The highest point of the park is the peak of Mt. **Triglav** (2864 m), which also gave the park its name, whilst its lowest point lies in **Tolmin Gorges** (180 m).

The main objective of the park is to protect and to preserve the outstanding natural and cultural values which can be found among the Alpine peaks, in crystal clear waters, deep-cut gorges, the remains of virgin forests, rich Alpine flowers and the typical animal kingdom and in the outstanding cultural and historical heritage of the area.

Trenta Lodge, the main information centre of the park in the Soča Valley, offers visitors its museum collection, thematic and artistic exhibitions and various social events. Currently a new park information centre is being developed in Kobarid.

www.tnp.si

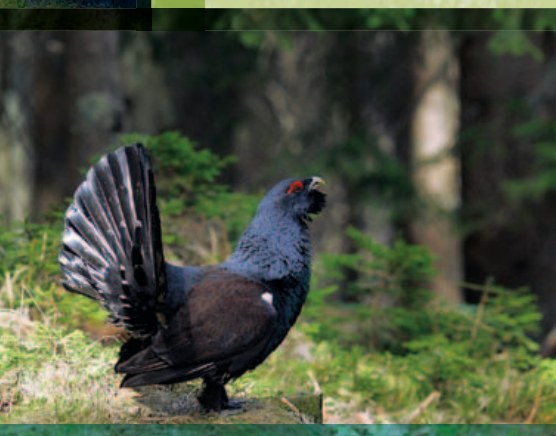
TIPS

- VISIT THE LIVING MOUNTAIN PASTURES AND TRY THE ALPINE CHEESE.



Code of conduct in the Triglav National Park:

- ❁ *Respect the customs and traditions of the people who live in the park.*
- ❁ *Do not make any noise so as not to disturb the wildlife.*
- ❁ *Do not pick Alpine flowers.*
- ❁ *Take the waste with you, along with your memories.*
- ❁ *Dogs should be kept on a leash.*
- ❁ *Park trails are intended for hikers and cycling along the trails is not permitted.*
- ❁ *Follow the signs along the trail.*
- ❁ *Leave your vehicles in designated places.*
- ❁ *Outdoor camping is prohibited.*





Mangart



Soča



BOVEC

THE BOVEC AREA IS SITUATED IN THE HEART OF THE TRIGLAV NATIONAL PARK AMONG THE PEAKS OF THE JULIAN ALPS WHERE THE CRYSTAL CLEAR SPRING OF THE EMERALD SOČA RIVER ORIGINATES.

The town of Bovec is an outdoor sports centre of the Soča Valley. Rafting, kayaking, hiking, cycling, skiing and paragliding are just some of the activities from the wide offer of numerous sports agencies. The turbulent history of the town and diverse cultural heritage allow you to gain new experiences.

The Bovec area with its numerous sights is a popular destination for photographers and filmmakers from all around the world and was also used as the shooting site for the Walt Disney movie The Chronicles of Narnia.

Some people call the Bovec area the land of the Slovenian superlatives:

- ❖ the highest-lying mountain road to Mangart's Saddle (2072 m),
- ❖ the highest-lying road pass Vršič (1611 m),
- ❖ the richest waterfall, the mighty Boka,
- ❖ the highest-lying ski slope Kanin-Sella Nevea (2300 m).



Soča

www.bovec.si

TIPS

- ATTEND THE PERFORMANCE OF THE ASSOCIATION 1313.
- VISIT THE GOLF COURSE.
- TAKE A FLIGHT WITH A GLIDER.
- DELIGHT YOUR TASTE BUDS WITH THE BOVEC CHEESE, FRIKA AND KRAFI.
- TAKE A WALK IN THE ŠUNIK WATER HURST.



Svinjak



Kanin



Bovec, Čezsoča

SIGHTS

Strengthen your creative powers at the **spring of the Soča River**, under the waterfalls in the Loška Koritnica Valley, under the mighty **Boka Waterfall** or in the fairy-tale environment of the Virje Waterfall. The Bovec area invites you with its high-altitude Karst of the **Kanin mountain range** and with living mountain pastures and family cheese dairies where visitors can take a closer look at the production of the Bovec sheep cheese. Take an ethnologically coloured **Soča Trail**, or historical Walk of Peace, see the collections of the Stergulc House in Bovec and of the TNP Museum in Trenta, admire the church frescoes of painters Jernej from Loka, Tone Kralj, Ivan Grohar and the collection of Nature and History in the **Kluže Fortress**.



Soča





Bovec

Events

The Bovec area is the stage for various sports and cultural events. Each year, sports enthusiasts look forward to the Bovec Race, Bovec Trek Race, Cycling ascent to Mangart, Freeride Battle and to the Walking the trails of Bovec event. At the Kanin ski resort many events are being organized where visitors are entertained by various musicians.

- ❑ **EMAUS** – International old-time skiing competition (Easter Monday).
- ❑ **Kluže Festival** – International Festival of Ambient events (July).
- ❑ **Bovec day, Farmer's Games, Trenta Fair** (July) and **Potato festival** (August).
- ❑ **Bovec Thursday Musical Evenings** (July, August).
- ❑ **Bovec Outdoor Film Festival (BOFF)** and the **Festival of Snow Sculptures** (December).



Boka



Kluže

Kozjak



Globoški potok



Kobarid

KOBARID



Kobarid

BESIDES THE TOWN OF KOBARID, THE KOBARID AREA ALSO COVERS BREGINJSKI KOT VALLEY, LIVEK AREA, THE GORGE OF TRNOVSKA SOTESKA AND PICTURESQUE VILLAGES UNDER MT. KRN.

The town of Kobarid was put on the map of the world's history by the dramatic events of World War I. Numerous memorials and remains of the Isonzo Front are interconnected in the Walk of Peace and are exhibited in the famous **Kobarid Museum**.

The Kobarid area represents a kayaking, paragliding and hiking destination. One of its most visited sights is the mysterious **Kozjak Waterfall**. In Breginjski kot Valley visitors can visit numerous popular bathing spots along the Nadiža River. Mt. Kolovrat which can be accessed from Kobarid as well as from Tolmin offers luxurious views from the Julian Alps to the Adriatic Sea.

The town of Kobarid is also famous as a culinary destination. Distinguished restaurants interconnected into the **Kobarid Gastronomic Circle** will delight even the most demanding lovers of good food and top-class wine.

www.dolina-soce.com

TIPS

- VISIT THE KOSEČ GORGE.
- TRUST YOUR PARAGLIDING PILOT.
- SWEETEN YOURSELF WITH THE FAMOUS LOCAL DESERT **KOBARIŠKI ŠTRUKLJI**.



Soča





Breginj



SIGHTS

All key sights of the Kobarid area – Kozjak Waterfall, Soča Gorge, remains of the World War I, archaeological site Tonocov grad, the Kobarid Museum and the Dairy Museum – are interconnected by the **Kobarid Historical Trail**. In Breginj'ski kot Valley visitors can admire the remains of the Venetian-Slovenian architectural style. At Vrsno it is possible to visit the birthplace of Simon Gregorčič, one of the most popular Slovenian poets. Village Drežnica attracts visitors with its pilgrimage Church of Sacred Heart, picturesque Forma viva and with interesting private collections.

Sv. Anton





Kobariški muzej



Planica

Events

Events in the Kobarid enrich the prevailing tourist offer; from nature to sports and from heritage to gastronomy. The most authentic event of the area is most certainly the Carnival in Drežnica which carries the tradition from generation to generation through its characteristic wooden face masks.

- ❖ **Carnival in Drežnica** – Traditional village carnival custom with original masks: “the beautiful” and “the ugly” (February).
- ❖ **Outdoor Show** – Sports climbing, paragliding, kayaking and cycling competitions, outdoor sports festival (May).
- ❖ **Štrukljada** – Festival of the most famous dessert from Kobarid, *kobariški štruklji* (June).
- ❖ **Soča Trout Festival** – Educational, competitive and social fishing event (August).
- ❖ **Hiking Festival** – Discovering the autumn beauties of the Soča Valley (September).



Nadiža





TOLMIN



Tolmin

TOLMIN MOUNTAIN RANGE, BAŠKA GRAPA VALLEY, PLATEAU ŠENTVIŠKA PLANOTA AND THE VASTNESS OF TREBUŠA COMPLETE THE SOUTHERN MOUNTAIN RANGE OF THE JULIAN ALPS.

The town of Tolmin, which sunbathes on the terrace above the confluence of Soča and Tolminka rivers, is the administrative centre of the valley. The town is connected to Most na Soči, which is well-known for its archaeological sites, with an accumulation lake.

In the Tolmin area, the Soča River gets much calmer and therefore more appropriate for kayak beginners and families. Mt. **Kobala** is one of the best paragliding and hang gliding take-offs in Europe. The Tolmin area offers almost unlimited possibilities for mountain biking, whilst its rivers attract fishermen from all around the world.

The picturesque mountain pastures are well-known for the production of the famous **Tolminc Cheese**. Numerous remains of World War I and fortifications from the times of the Rapal Border offer various trips into history. A 100-year old railroad is routed through the Baška grapaValley. With its attractive stone bridges and tunnels it represents a true architectural monument.

www.dolina-soce.com

TIPS

- TAKE A THEMATIC WALK INTO THE HISTORY OF MOST NA SOČI.
- VISIT THE PICTURESQUE ECO VILLAGE ČADRG.
- TRY *FRIKA* MADE OF TOLMINC CHEESE.



Most na Soči





Tolminski muzej



Javorca



SIGHTS

The stirring history and the everyday life of the local population through many centuries are exhibited in the **Tolmin Museum** which has a special place reserved for the great Tolmin Peasant Uprising of 1713.

The Tolminka Valley hides the **Memorial Church of the Holy Spirit in Javorca** which is the most beautiful memorial of World War I.

The Tolmin area is a land of living waters. The popular **Tolmin Gorges** – the entry point into the Triglav National Park, the mighty Volarja Waterfalls, wild ravines of Trebuša, easily accessible waterfalls Beri and Sopota represent an inexhaustible source of hiking ideas.

Most na Soči, Tolmin



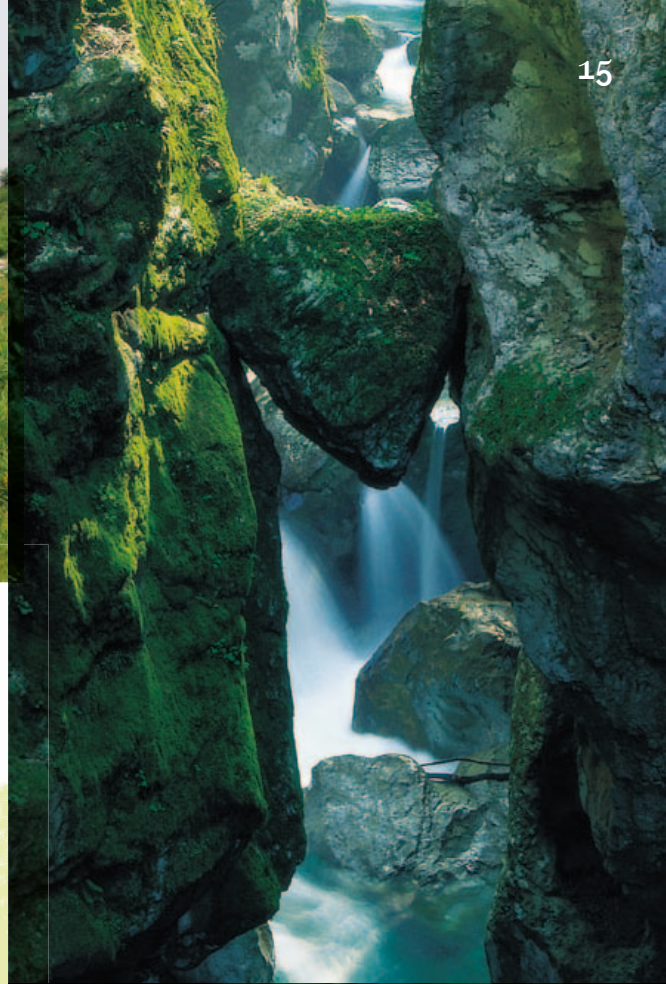


GM40

Events

The Tolmin area slowly but persistently becomes a stage for various festivals and a destination for lovers of metal, rock, popular, alternative and folk music. The popular festival scene at the confluence of two crystal clear Soča and Tolminka rivers gives a special value to these festivals.

- ❖ **Organic Festival** – organic farms offer (May).
- ❖ **GM40** – Demanding mountain running trial on a 42,2 km long track with 5.600 m of height difference (June).
- ❖ **Metalcamp** – The most visited festival in Tolmin which attracts lovers of heavy metal music from all around the world (July).
- ❖ **Sajeta** – The oldest alternative music festival with creative workshops in Tolmin (July/August).
- ❖ **Paragliding competitions** – The Tolmin area is a popular environment for many international paragliding and hang gliding competitions (summer).



Tolminska korita



Metalcamp





Kanalski Vrh



Kanal



KANAL



Kanal

www.tic-kanal.si

TIPS

- VISIT PRIVATE ETHNOLOGICAL AND WAR COLLECTIONS IN MELINKI, AVŠJE AND KAMBREŠKO.

THE TOWN OF KANAL IS A MEDIEVAL TOWN WITH A RICH CULTURAL HERITAGE.

The most picturesque sight of the town is the **two-arch stone bridge** which divides the town in two. In the centre of Kanal there is the old town centre with the Church of the Assumption, Neptune Fountain, picturesque **square of Kontrada** with the Gothic House, the gallery and the memorial room of the painter and graphic designer Riko Debenjak.

Trails routed on the Kanalski Kolovrat and on the edge of plateau Banjšice offer gorgeous views towards the Veneto and Friuli regions and towards the Julian Alps. By bike, on foot or by car visitors can discover the intact corners of nature, remains of World War I, rich natural and sacred heritage of the countryside and enjoy the gorgeous panoramic views.




- CHECK OUT THE EXHIBITIONS AT THE GALLERY OF RIKO DEBENJAK.
- VISIT SAINT KANCIJAN CHURCH IN BRITOF WITH ITS THREE-PART GOTHIC ALTAR.





Downhill Avče





Marijino Celje

SIGHTS

Besides the town itself, Kanal offers visitors numerous sights and sightseeing points in its vicinity. The most visited are **Marijino Celje in Lig**, the artificial Kanalski Vrh accumulation lake, meteorite in Avče, Savinka Waterfall, Church of St. Ahac in Prilesje and various remains of World War I.

Events

The entire summer is filled with action, entertainment and relaxation. One can visit donkey races, try bleak fishing or attend the traditional competition in jumping off a bridge. When the Soča River slowly washes away the playful summer, a time for cultural events takes place again. The square of Kontrada, with its pleasant old borough centre ambient, becomes the central theatre stage beneath the stars.

- ❖ **Downhill Avče** – Adrenaline downhill (April).
- ❖ **Jumping off the bridge**– International competition in jumping off a 17 m bridge into the Soča River (August).
- ❖ **Donkey races** – Entertaining donkey race in Levpa (August).

- ❖ **Kogoj's days** – International festival of modern music in Kanal (September–November).
- ❖ **Chestnut festival** – Presentation of the chestnut picking tradition and of the use of chestnuts in the past and in present times, Lig (October).



Levpa



Solkan, Nova Gorica



Nova Gorica



NOVA GORICA

www.novagorica-turizem.com

NOVA GORICA, THE CITY OF ROSES, IS A YOUNG CITY AT THE BORDER WITH ITALY.

It is a perfect starting point for visiting Venice, Adriatic Sea or the Julian Alps. In the wider region, the city of Nova Gorica is especially known as a **gaming centre**, as it offers plenty of entertainment and interesting events in its modern entertainment centres. The city is surrounded with a beautiful natural environment, gardens full of roses, exotic vegetation in the **Park Rafut**, mysterious Karst phenomena and with 100-year old trees in the **Trnovo Forest**.

The city also boasts a range of distinguished restaurants, whilst visitors can try traditional rustic delicacies in one of the many typical country feasts (*osmica*) in the vicinity. Nova Gorica is an ideal place for the connoisseurs and lovers of top-class wine, as it is an intersection point of Vipava, Karst and Brda wine districts.

TIPS

- BUNGEE JUMPING OVER THE SOČA RIVER - DO YOU DARE?
- VISIT THE MINI JOINERY MUSEUM IN SOLKAN.
- TAKE A WALK ACROSS THE UNIQUE MOSAIC OF THE NEW EUROPE - THE EUROPE SQUARE.
- VISIT INTERESTING EXHIBITIONS AT THE VILLA BARTOLOMEI.

Solkanski most





Sveta gora



Sabotin

SIGHTS

There are two interesting hills rising above the town of Solkan. Mt. **Sabotin** with the remains of World War I organized in the Peace Park and Mt. **Sveta gora** which is a famous pilgrimage centre.

High above the Soča River the **Solkan Bridge** elegantly spans across the river. With its large span it is the largest stone arch railway bridge in the world. By the Soča River it is possible to visit a modern kayak centre or the adrenaline »Fun park« which offers adventure to families and more demanding visitors.

Across the Solkan Bridge, the Bohinj railroad is operational ever since 1900. Visitors can take a train ride along the **Bohinj railroad** in the museum train, which in the past transported our ancestors, and admire the beauties of the emerald Soča River.



Soča



Brda



Fun park







Events

Besides the numerous interesting events in Solkan the kayak centre by the Soča River hosts many national and international white-water competitions. The programme of events is also diversified by the summer events in Nova Gorica, like the International Meeting of Saxophone Players or other festivals. The countryside of the city of Nova Gorica is being revived by traditional thematic events and celebrations which delight visitors with culinary, cultural and musical events.

- ❖ **International Exhibition of Christmas Crib on Sveta Gora** – in the Franciscan monastery on Mt. Sveta gora (December, January).
- ❖ **Rose festival** – Central spring cultural-social event (May).
- ❖ **Scrap, cattle and wine festival** – Culinary event and wine degustation (June).
- ❖ **Soča Rowing Regatta** – Traditional race on the Soča River with kayaks, canoes and rafts (September).





-  information
-  level of difficulty - severity
(with no reference to level of danger)
-  access and/or exit point not in order
-  access and/or exit point
-  dangerous stretch (prior inspection necessary)
-  unsuitable for vessels

- ❑ **Water activities on the Soča River and the Koritnica stream are only permitted between 9 a.m. and 6 p.m. from 15th March to 31st October.**
- ❑ **It is strongly recommended that visitors are accompanied by experienced and qualified local guides. All such activities are undertaken at one's own risk. Access to the river is only allowed at specially marked places. To use the above mentioned places to enter or exit the river it is necessary to have a permit. Camping is only permitted in the designated campsites. Any breach of regulation is liable to a fine in accordance with the Municipal Order. Respect the nature and park your vehicles only in designated parking spaces!**



Adventure in nature





Water sports



Each year, from April until October, the rapids of the emerald Soča River become a popular challenge for lovers of water sports. Besides numerous **kayakers**, each year an ever increasing number of visitors descend down the Soča River in **rubber boats** with the help of experienced guides of local sports agencies. Visitors who would like to experience the waters of the Soča River more intensively decide to take an organized descent with a **river bob** or decide to explore the picturesque gorges and pools of the tributaries of the emerald beauty with the help of experienced guides. The distinctive blue-green **lake at Most na Soči** where the river »rests« attracts tourists who prefer a peaceful ride in the river boat. During the summer, the Soča River is also very pleasant **to take a swim** in. Even more popular rivers for such pleasures are the Nadiža and Idrijca rivers which are considerably warmer than the Soča River.

Fishing



The Soča River and its tributaries are a **paradise for fly fishing** which is the only allowed form of fishing in the Soča Valley. Fly fishermen are very enthusiastic about the famous **Soča Trout**. Although the waters of the Soča River also present a home to brown trout, rainbow trout and graylings the giant olive-green marmoréal fish, also called *Salmo Marmoratus*, claims the special prize in the emerald courts of the Soča River. It lives in the secluded, hard to reach parts of the watercourse of the Soča River, and can grow up to 140 cm in length and can reach up to 24 kg in weight. Fishing permits can be bought from authorized dealers. The fishing season lasts from April until the end of October.



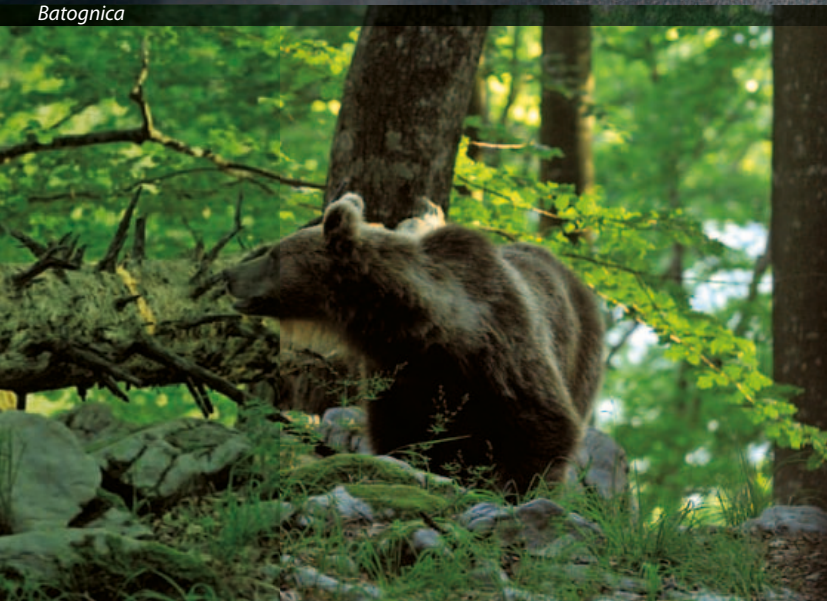


Kanin



Batognica

Driseipoh



Hiking



THE SOČA VALLEY IS A LUXURIOUS HIKING SELF-SERVICE CENTRE WHERE EVERYONE CAN FIND THEIR FAVOURITE CHOICE.

From friendly hikes to nearby sights, strolls by the Soča and other rivers, explorations of ancient forests or discoveries of already forgotten trails to strolls along the sightseeing ridges, ascents on mountain peaks or true alpine climbing ascents over the steep mountain walls.

The **Soča Trail** is an educational trail in the Triglav National Park, which winds along the young Soča River through the Trenta Valley. The **Slovenian Hiking Trail** and **Via Alpina** are routed across the highest peaks and ridges of the Julian Alps at the northeast edge of the valley. The **Walk of Peace** follows battle lines of World War I through the entire valley, whilst the **Old Border Trail** follows fortifications from the times between the two World Wars. The **European Footpath E7** crosses the valley crosswise from the river Nadiža to Baška grapa Valley. In the lower part of the valley, the **Path of the Three Temples** interconnects three renowned pilgrimage centres – Sveta gora, Marijino Celje and Stara gora. The youngest of the longdistance trails is the **Alpe Adria Trail**, which connects Mt. Grossglockner with the Adriatic Sea through the valley and across the Brda region. There are also hundreds of shorter tourist and hiking trails routed between the above mentioned trails.

Kolovrat

Stol

Krnsko jezero

Vie ferratas

The Soča Valley is a starting point for some of the most picturesque vie ferratas in the Julian Alps. These routes are intended only for experienced hikers or hikers accompanied by guides!



Walk of peace



Krasji vrh

FROM THE JULIAN ALPS TO THE ADRIATIC SEA, THE WALK OF PEACE INTERCONNECTS THE REMAINS OF WORLD WAR I, fortifications, military and sacral memorials, sites of former battles and natural sights along the entire area of the onetime Isonzo Front.

The most interesting points along the Walk of Peace are **outdoor museums** arranged on the authentic locations of front lines (Ravelnik, Čelo, Zaprikraj, Kolovrat, Mrzli vrh, Mengore, Globočak, Korada, Vodice and Sabotin), the Kluže Fortress, Charnel Houses in Kobarid and Tolmin, the Memorial Church of the Holy Spirit in Javorca, and numerous military cemeteries and chapels. The Walk of Peace tells stories of the past and of the present everyday life, allows genuine experiences, keeps the memory of the victims of war and promotes the value of peace. It is suitable for hikers and cyclists, whilst some of the sights can also be accessed by car or by bus. We recommend you to take guided tours with local tourist guides.

THE ISONZO FRONT was part of the southwest front which in World War I ran between the Italian and the Austro-Hungarian armies from the pass of Stelovio on the Swiss-Italian-Austrian border to the Adriatic Sea. Within 29 months of fighting, from May 1915 until October 1917, twelve Isonzo battles took place, in which approx. 300.000 soldiers lost their lives. The last battle was a decisive one and is known as »The Miracle of Kobarid«.



Ernest Hemingway

The world-famous American writer also experienced the battles of the last year of World War I as volunteer medical orderly and ambulance driver. For the scenery of his historical novel "A Farewell to Arms" he used the Isonzo Front.



Long distance trail

- | | |
|--|---|
|  Soča Trail |  Old Border Trail |
|  Slovenian Hiking Trail |  European Footpath E7 |
|  Via Alpina |  Path of the Three Temples |
|  Walk of Peace |  Alpe Adria Trail |

THE KANIN–SELLA NEVEA SKI RESORT ATTRACTS NUMEROUS LOVERS OF NATURAL SNOW AND ALL VISITORS WHO WOULD LIKE TO ENJOY IN THE SKI BEACH OVERLOOKING THE ADRIATIC SEA.

SKI RESORT

KANIN–SELLA NEVEA



30 km of carefully stamped ski slopes and 5-km-long descent from the saddle to the valley in Sella Nevea with the height difference of 1200 m classify the Kanin ski resort as one of the largest Slovenian ski resorts.

Ski holidays in the Soča Valley are also diversified by other winter experiences: Organized **sledding** on arranged sledding trails, **snowshoeing**, **cross-country skiing**, **ice climbing** and **ice skating**.

During the summer Mt. Kanin becomes a very popular sightseeing point as the cableway offers an extremely comfortable access to the altitude of 2.202 m. The last cableway station represents a starting point for attractive **high-altitude hiking trips** and climbing ascents, whilst the Kanin mountain range represents the destination for the most demanding descents into the deepest abysses of the Julian Alps, which are reserved for the experienced cavers.

Backcountry skiing

Many mountain peaks above the valley are suitable for backcountry skiing. We recommend the backcountry skiing accompanied by mountain guides.



PARAGLIDING AND HANG GLIDING



Perfect conditions are the reason for the fast development of paragliding and hang gliding and for series of competitions on both national and international levels, which take place in the Soča Valley each year.

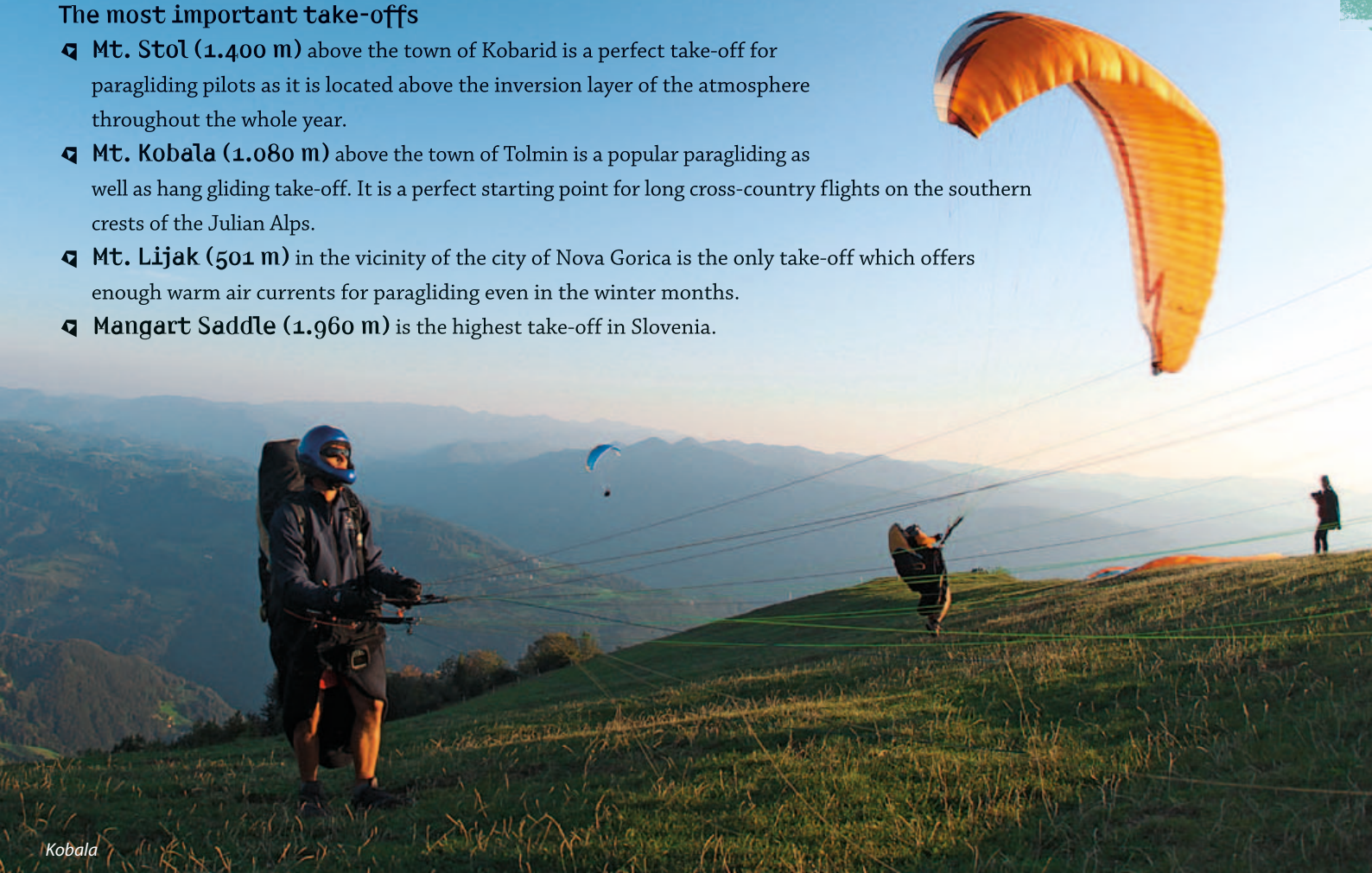
Tandem flights can also represent an exciting diversification of holidays in the Soča Valley. The main take-offs are all accessible by car, whilst the landing places and information boards are all well-arranged.

The most important take-offs

- ❑ **Mt. Stol (1.400 m)** above the town of Kobarid is a perfect take-off for paragliding pilots as it is located above the inversion layer of the atmosphere throughout the whole year.
- ❑ **Mt. Kobala (1.080 m)** above the town of Tolmin is a popular paragliding as well as hang gliding take-off. It is a perfect starting point for long cross-country flights on the southern crests of the Julian Alps.
- ❑ **Mt. Lijak (501 m)** in the vicinity of the city of Nova Gorica is the only take-off which offers enough warm air currents for paragliding even in the winter months.
- ❑ **Mangart Saddle (1.960 m)** is the highest take-off in Slovenia.

Perfect combination to enjoy in the air

- ❑ OUTSTANDING WARM AIR CURRENTS
- ❑ STEEP MOUNTAIN SLOPES
- ❑ UNFORGETTABLE PANORAMIC VIEWS





Cycling



Stol

Cycling is most certainly one of the most appropriate but also one of the most interesting ways to explore the Soča Valley and its mountain background. Due to the extreme diversity of the terrain, one can choose between easier, family appropriate trips, and more demanding mountain ascents. Numerous forest trails, roads and cart tracks offer mountain bikers unlimited possibilities, whilst less demanding cyclists can take a ride on gentler valley roads and roads across certain plateaus.

These numerous cycling trails are all marked and described in cycling guidebooks and on maps, whilst in the natural environment very few of them are marked.

The growing popularity of cycling is confirmed by the numerous events:

- ❑ **Cycling Ascent to Mangart,**
- ❑ **Outdoor Show in Kobarid,**
- ❑ **Cycling across plateau Šentviška planota,**
- ❑ **Downhill Avče.**



OVERVIEW OF SPORTS ACTIVITIES AND OTHER OFFER

Sports activities	BOVEC	KOBARID	TOLMIN	KANAL	NOVA GORICA
Rafting	x	x	x		
Kayaking	x	x	x		x
Hydrospeeding	x	x			
Canyoning	x	x	x		
Sit on top	x	x			
Riverbug	x	x			
Stand up paddle	x	x			
Fishing	x	x	x	x	x
Hiking	x	x	x	x	x
Alpine climbing	x	x	x		
Sports climbing	x	x	x	x	x
Ice climbing	x	x	x		
Skiing	x				
Backcountry skiing	x	x	x		
Sledding	x				x
Ice skating	x				
Paragliding	x	x	x		x
Hang gliding			x		x
Cycling	x	x	x	x	x
Downhill				x	
MTB park	x				
Monster roller	x				
Horseback riding	x	x	x		x
Adrenaline park	x	x			x
Bungee jumping					x
Zip line and Flying fox	x				x

Other offer	BOVEC	KOBARID	TOLMIN	KANAL	NOVA GORICA
Natural bathing areas	x	x	x	x	x
Outdoor schools	x	x	x	x	x
Alpine camps	x	x	x	x	x
Team building programmes	x	x	x		x
MICE	x	x	x		x
Congress tourism	x	x	x		x
Casino		x			x

SUPERLATIVES OF THE SOČA VALLEY

- ❑ **SOČA** – the most beautiful Slovenian river.
- ❑ **TRIGLAV** – the highest Slovenian mountain (2.854 m, Trenta).
- ❑ **KANJAVEC** – the highest Slovenian Alpine wall (1.470 m, Trenta).
- ❑ **KANIN** – the highest Slovenian ski resort (2.292 m).
- ❑ **BOKA** – the mightiest Slovenian waterfall (106 m, beneath Kanin).
- ❑ **ČEHI 2** – the deepest Slovenian cave (1.502 m, Kanin).
- ❑ **MIGOVEC SYSTEM** – the longest researched Slovenian cave system (24.900 m, Tolminski Migovec).
- ❑ **KOBARID MUSEUM** – the winner of the EMYA award (European Museum of the Year Award).
- ❑ **JAVORCA** – the most beautiful memorial of World War I (Tolminka Valley).
- ❑ **ROAD TO MANGART'S SADDLE** – the highest-lying Slovenian road (2,072 m).
- ❑ **SOLKAN BRIDGE** – the largest stone arch bridge among railway bridges in the world (85 m).
- ❑ **KAMP KOREN KOBARID**, the first Slovenian camp to win the EU Daisy Eco-Label.
- ❑ **PERLA** – the largest casino in Europe (Nova Gorica).
- ❑ **SOČA TROUT** – endemic fish of the Adriatic watercourse.
- ❑ **PROTECTED LOCAL PRODUCTS**: Bovec Cheese (sheep), Tolminc Cheese (cow).



Information and reservations



LT0 Bovec – TIC Bovec

Trg golobarskih žrtev 8
SI - 5230 Bovec
T: +386 (0)5 384 19 19
E: info@bovec.si
www.bovec.si

LT0 Sotočje – TIC Kobarid

Trg svobode 16
SI - 5222 Kobarid
T: +386 (0)5 380 04 90
E: info.kobarid@lto-sotocje.si
www.dolina-soce.com



LT0 Sotočje – TIC Tolmin

Petra Skalarja 4
SI - 5220 Tolmin
T: +386 (0)5 380 04 80
E: info@lto-sotocje.si
www.dolina-soce.com



TIC Kanal

Pionirska ulica 2
SI - 5213 Kanal
T: +386 (0)5 398 12 13
E: tic.kanal@siol.net
www.tic-kanal.si

Turistična zveza – TIC Nova Gorica

Delpinova ulica 18 b
SI - 5000 Nova Gorica
T: +386 (0)5 330 46 00
E: tzcticng@siol.net
www.novagorica-turizem.com



ISSUED BY: RDO Smaragdna pot, 2012 • TEXT: RDO Smaragdna pot • LANGUAGE REVISION: Alenka Omejc • TRANSLATION: Prevekso d.o.o. • MAPS: Kartografija d.o.o., Jaka Modic • PHOTOS: Janko Humar, Matjaž Klemenčič, Andraž Krpič, Matevž Lenarčič, Milko Lesjak, Rafael Marn, Oton Naglost, Tomaž Ovčak, Leo Caharija, Aleš Fevžer, Aleš Frelih, Matej Vranič, Janez Pukšič, Srdjan Živulović, Dan Briški, Claudio Costerni, David Štuc Zornik, Mirja Madon, Bruno Bizjak, arhiv TIC Kanal • DESIGN: Ivana Kadivec, Jaka Modic • PRINTED BY: Gorenjski tisk • EDITION: 21.000

